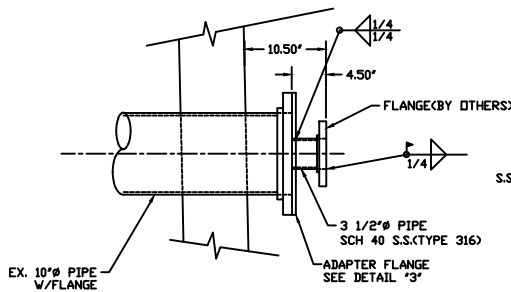
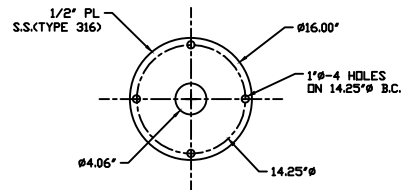


DETAIL "1"

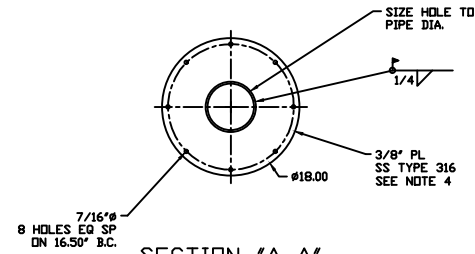
ASSOCIATED INSTRUMENT	UNIT(S)	NOMINAL PIPE SIZE	QTY	"A"	SLIP-ON FLANGE
DILUTION PROBE	#1	4"	1	53.50'	4"-150#
DILUTION PROBE	#3	4"	1	47.50'	4"-150#



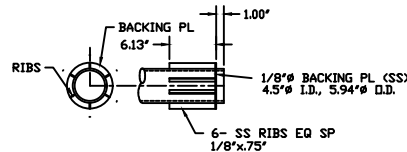
DETAIL "2"
OPACITY PORT
(MODIFY EX. GAS ANALYZER PORT)



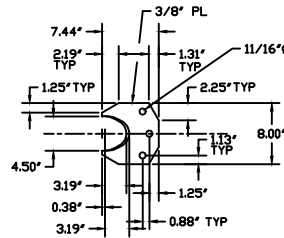
DETAIL "3"
ADAPTER FLANGE



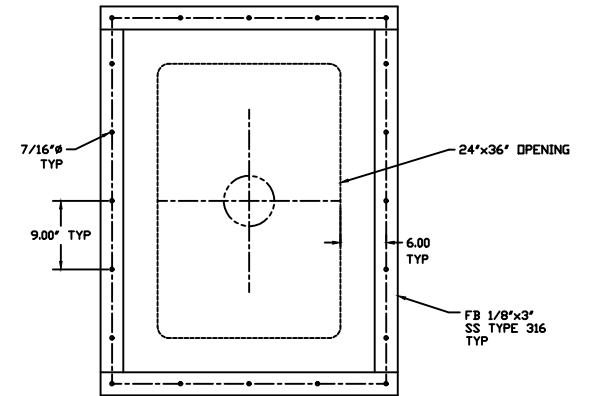
SECTION "A-A"



SECTION "C-C"



DETAIL "4"
PIPE SUPPORT PL



SECTION "B-B"

NOTES:

1. USE E309L ELECTRODES FOR WELDING STAINLESS STEEL NOZZLES TO CORTEN MATERIAL.
2. THE DIAMETER OF THE CORE HOLE ON THE BRICK LINER WALL SHALL BE 5 1/2" FOR THE 4" PIPE AND 8" FOR THE 6" PIPE.
3. PACK ANNULUS GAP BETWEEN PIPE AND CORE HOLE WITH EUCLID SR-93 IN ACCORDANCE WITH MANUFACTURER'S INSTALLATION INSTRUCTIONS.
4. MOUNTING PLATE TO BE ROLLED TO THE OUTSIDE RADIUS OF THE BRICK LINER.
5. ANCHORS SHALL BE 3/8" SS TYPE 304 EXPANSION BOLTS. ANCHORS TO BE INSTALLED PER MANUFACTURER'S RECOMMENDATIONS.
6. FLEXIBLE MEMBRANE MATERIAL SHALL BE NOMINAL 1/8" THICK, BLACK HYPALON BY FLEXIBLE PRODUCTS CORP. SIZE EXPANSION JOINT FOR ±3" VERTICAL AND ±3" HORIZONTAL MOVEMENT.

009331

No.	REVISION	DATE
1	REVISED AS BUILT	9-18-94

CAROLINA ENGINEERING & CONVEYOR INC.
MT. PLEASANT, SOUTH CAROLINA

JACKSONVILLE ELECTRIC
NORTHSIDE GENERATING STATION
CEMS NOZZLE DETAILS

DESIGNED BY: DATE: 5-9-94
APPROVED BY: DR. BY: RJ
SCALE: 1 1/2"=1'-0"
CHECKED BY: TOLERANCE: ±1/8"
DR. NO. 094207
SHEET NO. 9